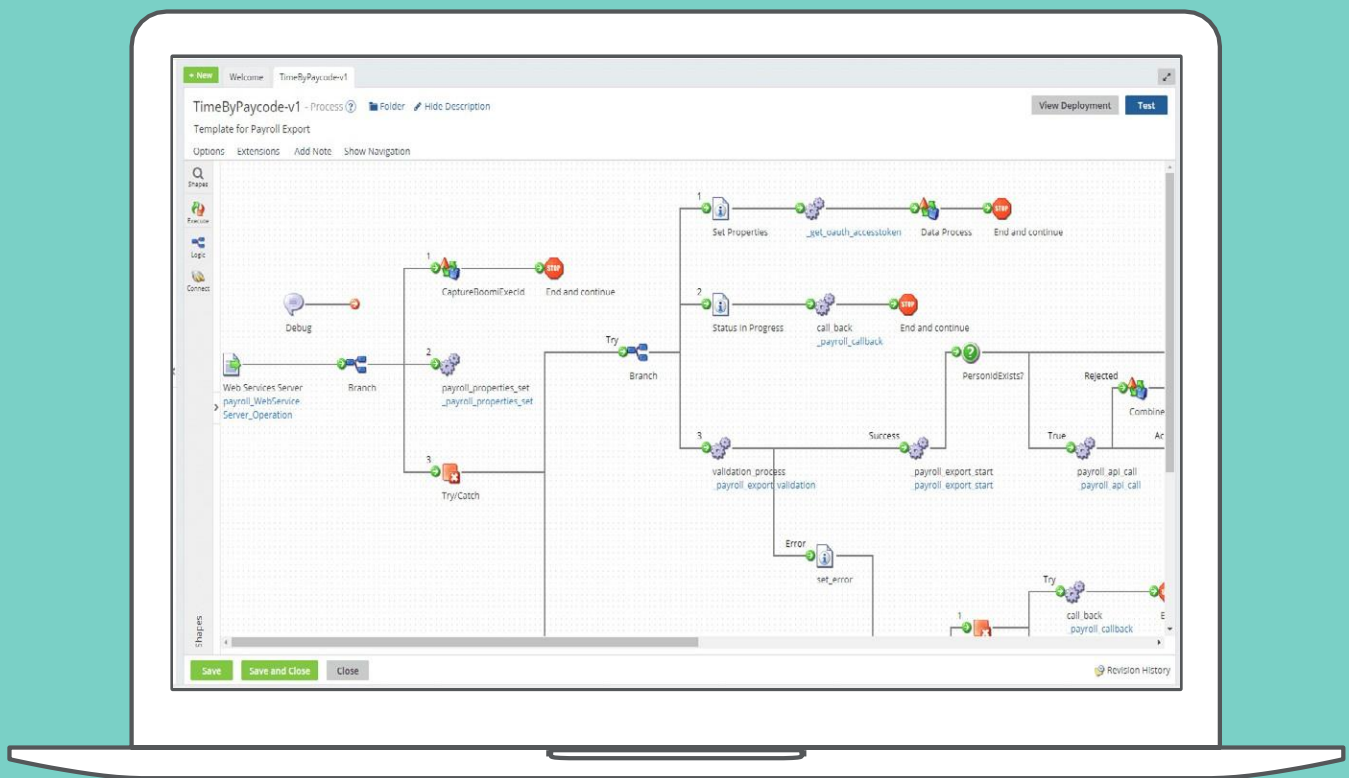


UKG Pro Integration Hub

Seamlessly connect UKG Pro and your enterprise applications

The UKG Pro® Integration Hub (formerly UKG Dimensions® Integration Hub) is your enterprise’s integrations command center, connecting UKG Pro and your other enterprise applications and systems. The collection of tools and technologies allows you to create powerful integration solutions right in UKG Pro. Powered by BoomiA, the UKG Pro Integration Hub enables you to design and build integrations as simple or complex as you need and to deploy them for the organization to use — all in the cloud.



Cloud-native integration platform

Being in the cloud provides reliable data connectivity, automatic updates, secure connections, and secure authentication.

There’s also less to worry about, with no additional equipment, software, or network infrastructure to install.



Dynamic data update

Regularly synchronize data across business applications such as payroll, enterprise resource planning (ERP), scheduling, benefits, point of sale (POS) or patient management software (PMS). Integrations Hub’s deep capabilities also allow dataset transformations for more complex needs.



Ease of use

The user-friendly tools and workflow allow your integration specialists to build and deploy integrations easily and quickly. Integration packs are also included to help cut down building time and provide more customization when needed.

Key benefits

For integration builders and specialists

Serves as a centralized location for all integration needs

Speed and simplify integrations between UKG Pro and third party systems and applications

No additional software or hardware is required

No coding expertise is required

Schedule integrations on a regular basis or on demand

For enterprises

Regular processes and tasks can be run on demand or on a schedule

Synchronize data across systems near real-time

Accelerate time to value

Develop robust and complex integrations with cloud computing

Features of UKG Pro Integration Hub

- Find resources and learn more about building integrations in UKG Pro through the UKG Developer Hub
- Connect UKG Pro with other business systems and applications through robust APIs
- Sync HR, payroll, benefits, and other third party business apps with UKG Pro
- Integration designer helps visualize the workflow to better understand how the integration will work
- Simple drag-and-drop connectors help you assemble integrations faster



Connect with us online @[UKG.in](https://www.ukg.com)

© 2023 UKG Inc. All rights reserved. For a full list of UKG trademarks, please visit [ukg.com/trademarks](https://www.ukg.com/trademarks). All other trademarks, if any, are property of their respective owners. All specifications are subject to change.

DIY0262USENV2